

Innovating Energy Management with Galooli

A Guide

An abstract graphic at the bottom of the page consists of a dense network of glowing blue dots connected by thin, light blue lines, creating a complex, interconnected web-like structure that resembles a data network or a molecular structure.

The world is wising up to the importance of being conscientious about its energy use. Beyond domestic households, SMBs, enterprises, and governments are starting to get serious about improving their efficiency. By the end of 2023, global investment in the low-carbon energy transition reached approximately \$1.77 trillion just in that year alone, driven by a 17% increase compared to 2022. Why this sudden jump?



Global energy insecurity has caused fuel prices to jump across all sectors, and in several instances, entire countries had energy shortages due to these price fluctuations. In addition, access to natural gas has been disrupted, causing countries to turn back to sources like coal. However, the outlook is far from bleak.



Energy efficiency endeavors since the turn of the millennium will save IEA countries nearly \$700 billion in energy costs, nearly a sixth of global annual costs. Additionally, global energy use has been 2% more efficient than in 2023, compared to the two previous years.



A significant part of these investments has been energy management and monitoring solutions, which are an intrinsic part of any organization or government's successful energy efficiency efforts. The market's size reached approximately \$1.56 billion in 2023. It is expected to grow to \$6.8 billion by 2032.

What Is Energy Management?

Energy management is the process of monitoring and controlling energy assets to minimize consumption and maximize efficiency and operations. This includes optimization of energy use towards reaching the best possible outcomes economically and environmentally as well as its conservation.

The process also aims to proactively prepare an organization for the production and future storage of energy, to eventually achieve environmentally sustainable or even [Net Zero](#) operations. Energy management systems and solutions are especially helpful by

reducing the necessity for on-site maintenance and upkeep and offering full control over remote locations and energy assets.

The most recent leap forward is leveraging AI and automations into the energy management process. Just as these resources have transformed IT management, monitoring and optimizing energy assets and facilities as a whole can require significantly fewer manual actions and human resources. Comprehensive energy management solutions can streamline your operations by providing your sites and assets:



**Overarching
visibility**



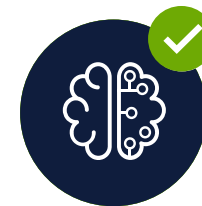
**Remote asset
management**



**Threshold-based
performance alarms**



**Live data tracking
and organization**



**Actionable
Insights**



**Remote control
capabilities**

What sets Galooli apart?

Energy management solutions are a dime a dozen, and oftentimes difficult to truly tell apart. Galooli has been driven to provide the most overarching and complete solution to address all of your remote management needs.



Site & Energy Management at Its Best

Galooli's remote monitoring and platform allows you to track, analyze and optimize your remote sites' and energy assets' performance, and provides you with data, knowledge, and conclusions that enable you to make evidence-based decisions.



Extensive Remote Control Capabilities

With Galooli, you can control your remote sites and assets without even setting foot on site and avoid unnecessary trips. Our platform enables you to turn on and shut down generators, batteries, vehicles, and HVAC systems, and even change and sync configuration settings remotely.



Gets You Right to the Point

Regardless of how much data you have, Galooli's Insight-to-Action solution features and processes it in a way that helps you get to the bottom line and respond accordingly, minimizing your efforts and time waste.



All-In-One Solution

With Galooli's, there is no need to switch between platforms to monitor and manage your different remote energy assets. Our holistic remote monitoring and management solution provides you with complete visibility and analysis over all your remote assets simultaneously while comparing their relative performance.



Easily Track Your Financial and Energy Kpis

Galooli's remote monitoring and management platform is where the real return on investment occurs. Using our platform, your organization can track your site's performance in terms of relative cost, along with potential and actualized savings.

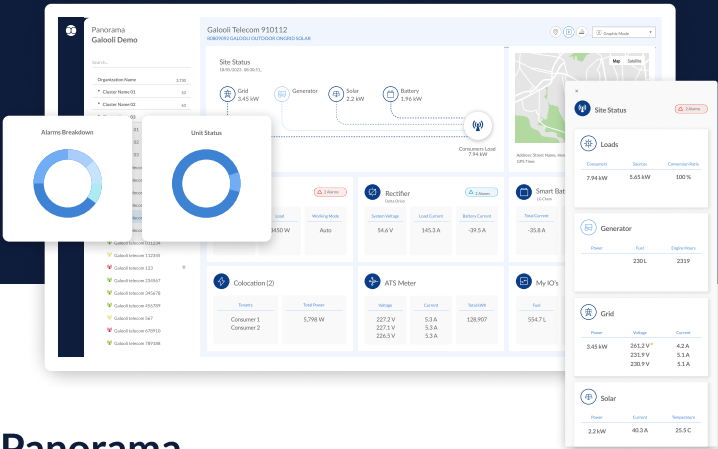


A Flexible Solution that Meets Your Needs

Galooli's solution fits your needs with customizable dashboards and reports, easy access to your chosen data, and a simple way to share information within your organization.

How do we do it? Our Solutions

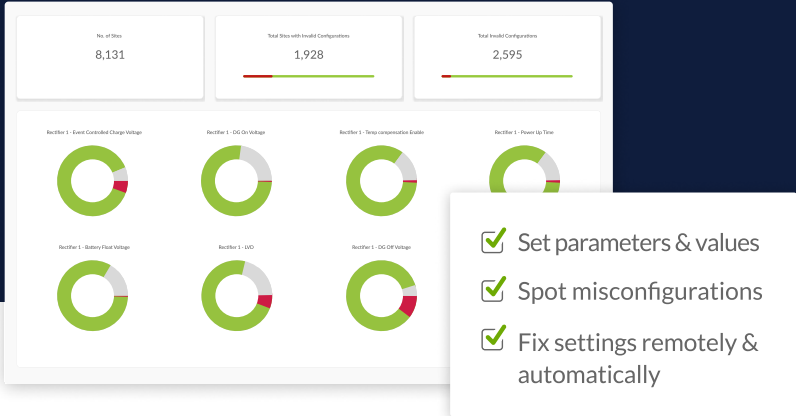
Our team is constantly looking for ways to bring the best services and tools to our customers. We've already developed some amazing including:



Panorama

The World's Most Powerful Energy Management Experience

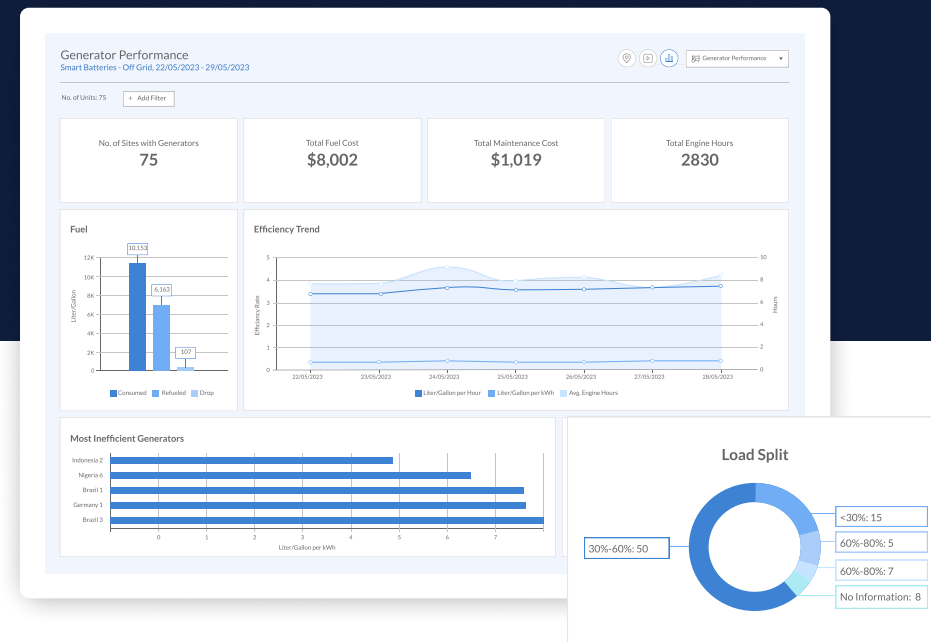
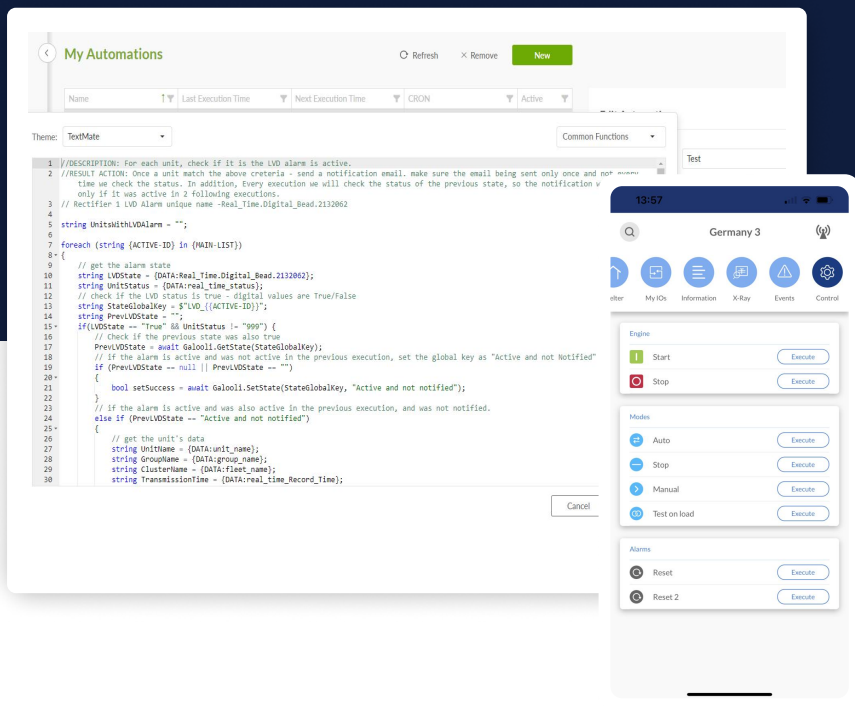
Our revolutionary web-based and mobile energy management platform. Using the latest patented prediction technology we actively manage, monitor, and control remote energy assets and facilities to optimize usage and preserve asset longevity.



X-Ray Set

Identify and Mitigate Configuration Issues Remotely

An enhanced configuration tool for our energy management platform. Identify and rectify misconfigured assets without ever having to step foot on-site. Remotely sync networks of assets all at once with automated error checks to ensure mitigation.



My Automation

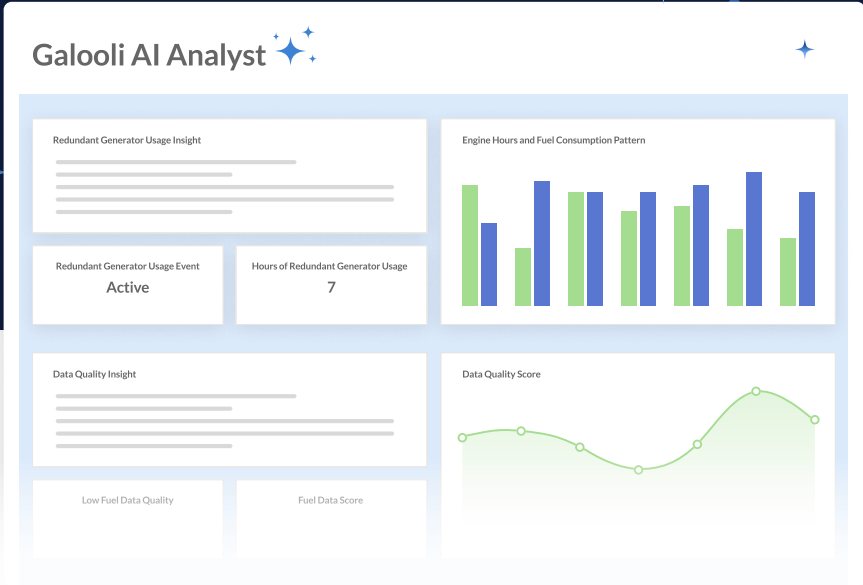
Adjust Our System to Your Needs

Allows creating automated workflows by writing code, applying them to remote sites and energy assets. In this way, users can customize the system to meet their needs, like getting accurate data or performing various actions immediately or on a schedule.

Dashboard Designer

Visualize Your Data Your Way

Allows users to create customized dashboards, visualizing their data according to their needs and preferences. Dashboards can be created either from scratch or based on premade dashboards already available in the system.



AI Planners

Plan ahead with No Hesitation

Using our AI-powered predictive analytics, users can plan remote-site visits by predicting the next time a physical site visit is required. As a result, organizations can plan their operations more intelligently and efficiently, reducing costs and time spent on unnecessary site visits.

Galooli Analyst

The New Member of Your Analysis Team

Processes large sets of data from various sources while considering historical patterns, resulting in an AI-based conclusion presented in straightforward language. The Analyst feature can also push its conclusions directly to the user's system. .

Maximizing Value Through Innovation



40%

Reduced
Operational Costs



90%

Reduced
Energy Loss



OVER

50%

Reduced Average
Fuel Consumption



OVER

3B

Data Points
Collected Daily



~950 GWh

Monitored Annually



TOTAL

\$ 300 M

In Energy Costs Saved
Last Year

Book a Demo